



# Door mounting kit

For Emotron VS10/VS30 AC drive and  
Emotron DSV15/35 AC drive



13544231

Mounting Instructions



A CG Product



## About this document

### **WARNING!**

Read this documentation carefully before starting any work.

- ▶ Please observe the safety instructions!
- 

### Document description

### Further documents



You will find information on wiring and commissioning in the mounting and switch-on instructions of the inverter.

---



Information and tools with regard to the Emotron products can be found on the Internet:  
<http://www.emotron.com/Download>

---

## Product information

### Product description

---

## Product information

### Product description

The Door Mounting Kit (Article number 01-6179-10) is a mounting set.

- The mounting set enables the keypad 01-6179-01 to be mounted into a user interface, e.g. control panel or control cabinet door. The keypad 01-6179-01 is not included in the scope of supply.

The Door Mounting Kit may only be used together with:

- keypad 01-6179-01

for

- Inverter VS10/30
  - Inverter DSV15/35
- 



These accessories can be used under the operating conditions of the assigned products. Differing or additional operating conditions are described here.

---

### Enclosure

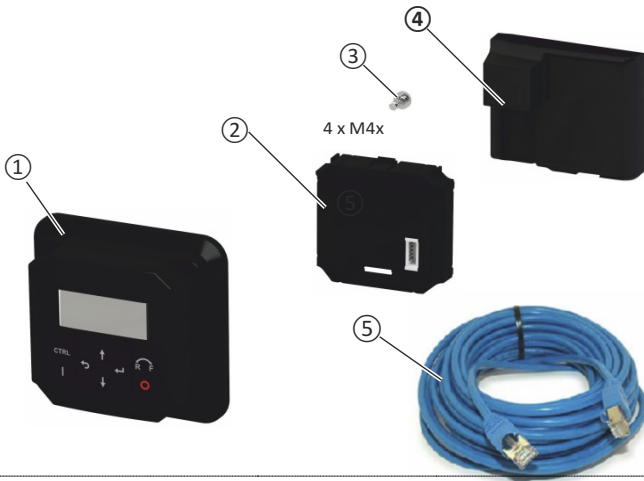
Mounting surface requirements:

- plane
- smooth
- stable
- clean

Achievable degree of protection

- CE: IP65
- UL: Type 4 (in Preparation)

### Door Mounting Kit - scope of supply



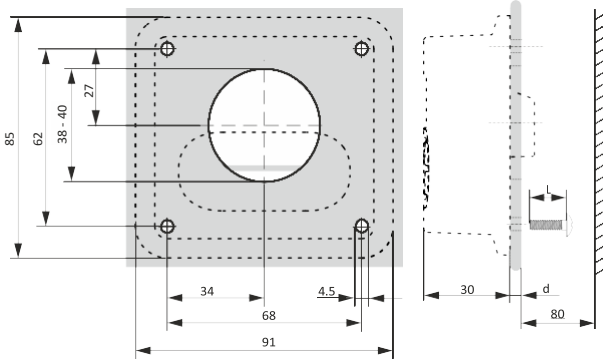
- ① Protective cover
- ② External adapter
- ③ Fixing material (4 x M4\*8 screw)
- ④ Inverter adapter

- ⑤ Connecting cable

## Mechanical installation

### Preparation

#### Prepare a mounting cutout

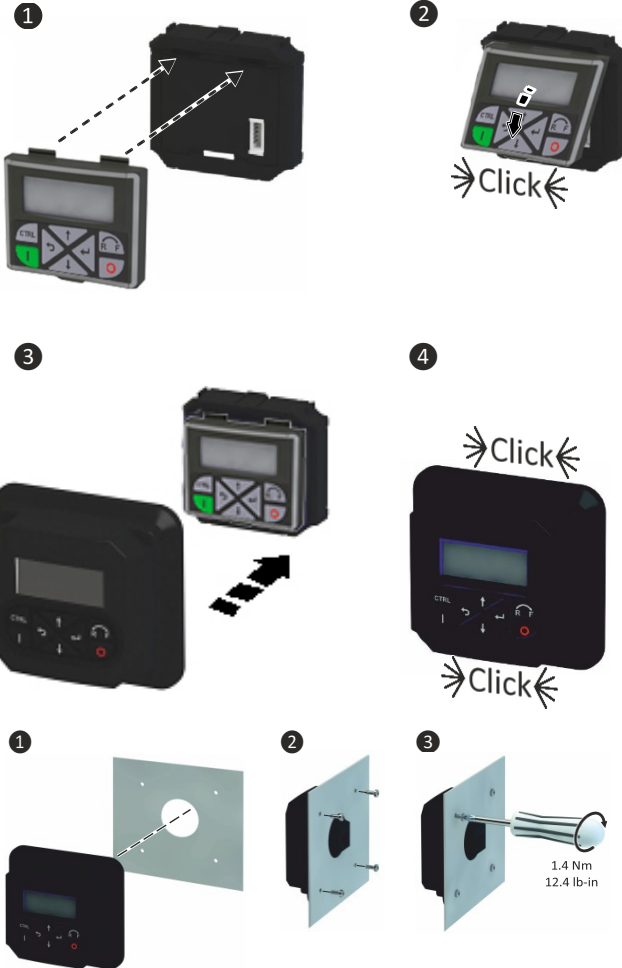


The M4\*8 mm screws are suitable for a material thickness of  $d = 2 \dots 4$  mm.

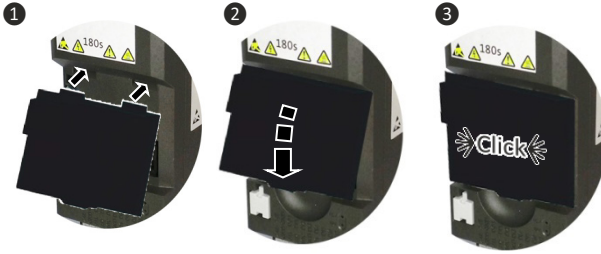
In the event of deviating installation conditions, the screws must be replaced in a suitable way. The effective thread length must be  $4 \dots 6$  mm.

Mounting

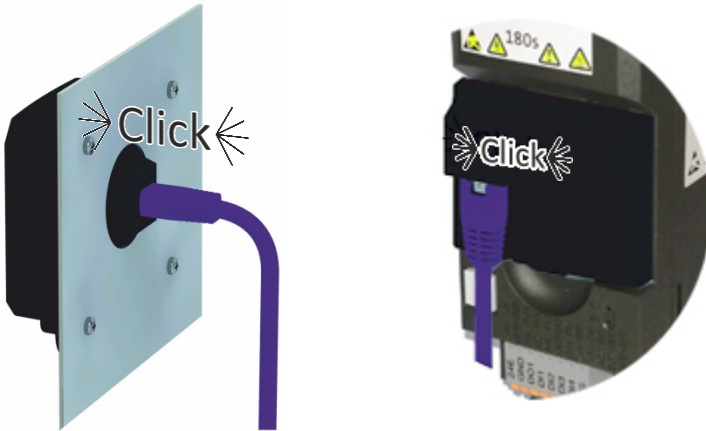
Mounting steps on the front side



**Mounting steps on the device side**



**Install the connecting cable**



Secure the connecting cable close to the mounting position against mechanical impact by means of appropriate measures.

CG DRIVES & AUTOMATION  
Mörsaregatan 12,  
Box 222 25  
SE- 250 24 Helsingborg,  
Sweden  
+46 42 16 99 00  
Info: [info.se@cglobal.com](mailto:info.se@cglobal.com)  
Order: [order.se@cglobal.com](mailto:order.se@cglobal.com)